

spectrolab.

SPECTROLAB LIGHTING

Professional working lights



reddot award 2016
winner lighting design



Focus Open 2015
Gold

Process-controlled day light spectra illuminate your workplace in best sun light quality and turns it into a real color reference work station.

Featuring a unique, innovative light system together with consistent alignment and high material quality this lamp sets a new standard in the biologically effective Lighting Technology.

FLOW

It brightens your workplace with an unattained color accuracy and a full spectra daylight coloring index of CRI>96.

It offers an illumination over 4000 lx with a light temperature of 5000 Kelvin and is dimmable in 5 steps according to your individual needs.

spectrolab FLOW shows all colors and textures with a high light quality level of a full spectrum daylight.

SCIENCE

Featuring an integrated daylight spot version Science represents an absolute novelty in modern lighting technology regarding light quality and applicability. It is an indispensable „must-have“ equipment for all laboratories, that create colors and shapes and evaluate their quality later.

There are 4 program settings controlled by touch-free interaction:
“composite” mode (for a longer processability of composites)
“pre-curing” mode (for the pre-curing of composites)
5000 Kelvin mode (with day light CRI > 97)
6500 Kelvin, (with day light CRI > 97)

All other features identically correspond to version FLOW

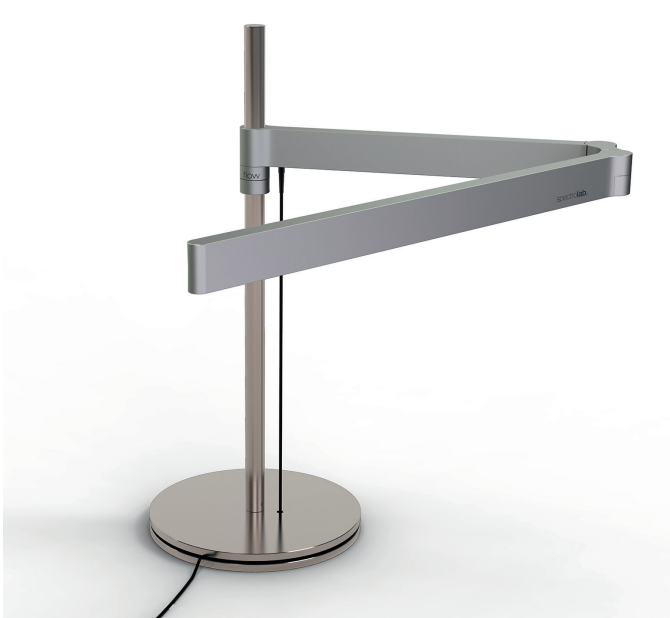


Example for pre-curing composites with the UV-light for a further elaboration



FLOW 360 and SCIENCE 360

Same light performance as version FLOW and SCIENCE but with a double-jointed light arm so it becomes easier to carry as both legs are completely foldable, second leg is turnable by 360°.



TECHNICAL SPECIFICATIONS

Material and colors:

All versions can be available in anodized silver ("silver") or in black ("studio black").

Light arm:

Anodized aluminum, arm height is continuously adjustable. Available with single or double-jointed arm (version 360).

Support:

Available with a stand or table adapter made of stainless steel.

Power supply:

Power supply unit: 100 VAC-240 VAC, 50/60 Hz

Design:

All versions are available with a flexible stand or table adapter and are of course interchangeable without any tools. The lamp comes as standard with a 3 mm thin cable (similar to an iPhone charging USB cable) and is fixed close to the support. This guarantees the most flexible height adjustability and the possibility to use two arms on the same support.

Dimensions:

The lamp arm is about 90 cm long (version 360, 93 cm) and can be rotated by 360 degrees. The support is 50 cm (19,69 in) high. Also available with an optional 70 cm (27,56 in) support.



reddot award 2016
winner lighting design

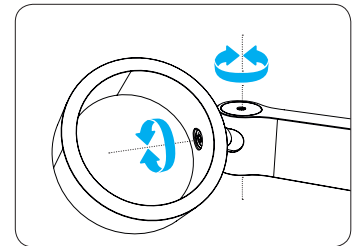
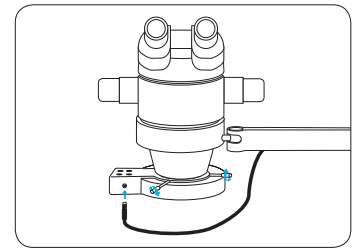
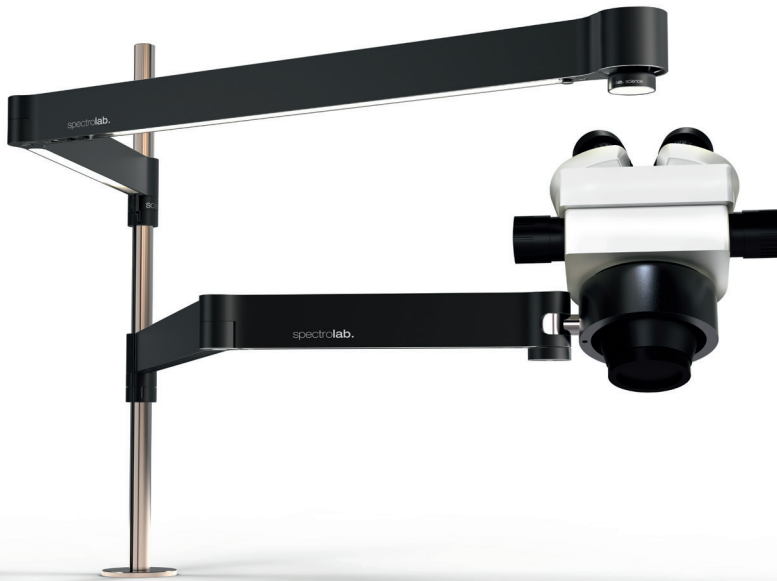
Winner Red Dot Design Award
lighting: Product Design 2016



Focus Open 2015
Gold

Winner of the international
design award 2015 of Baden
Wuerttemberg, FOCUS Open in Gold
for lighting, 16.10.2015

microscope holder spectrolab



Holder with integrated joint, movable to a 180 degree, backwards and forwards and inclined up and down. Joint position can be fixed with a hexagon head screw.

Cable integrated in the microscope arm for optional LED ring light illuminator

Can be combined with a Spectrolab working lamp science or flow on just one table fixed stand.



TECHNICAL SPECIFICATIONS

colors:

available in anodized silver or studio black

material:

anodized aluminum, continuously adjustable only fixable on the table mounted support

ring holder:

internal diameter: 76 mm
other diameters on request

dimensions holder arm:

available lengths of holder arm, fully extended:

- short (67 cm, 26,38 in)
- long (85 cm, 33,46 in)

Mikroscope

High performance Greenough stereozoom microscopes equipped with a variably adjustable zoom eyepiece



Binocular Microscope



Trinocular Microscope with 3. eyepiece for camera
Optional camera adapter available on demand

TECHNICAL SPECIFICATIONS

Technical Details for both versions
Only microscope body, without support

heads:
binocular, 360° rotating and 45° inclined.
Stereo zoom system for laboratories and industry
microscope suitable for holder with diameter 76 mm

interpupillary distance:
51-75 mm

dioptric compensation:
+/- 5 dioptrin on both eyepieces

eyepieces:
EWF 10 x 20 mm
Achromatic objectives 1x,
depth of focus depends on zoom
and totals 15 mm with a magnification 7x,
2 mm with a magnification of 40x.
Max standard magnification 45x,
higher on demand.
No internal illumination,
optional LED ring light illuminator.
Parfocal achromatic zoom 0,7x...4,5x
(6,428:1 zoom factor).
Working distance: 86 mm
protective lens against the ingress of dust

Accessories

LED ring light illuminator for microscope



TECHNICAL SPECIFICATIONS

With 60 LEDs, 3 W, 6500-7000 K

different illumination settings:

omnidirectional (ring completely on), oblique
(only a quarter or half ring switched on).

External power supply provided.

Power:

230 V

Diameter of the fixing ring: 60 mm

Buttons for brightness adjustment 0-100%.

Internal diameter: 60 mm (2.36 in)